

# Human IL-15RA/IL-15 R alpha/CD215 Protein

Cat. No. ILR-HM215

## Description

<b>Source</b>	Recombinant Human IL-15RA/IL-15 R alpha/CD215 Protein is expressed from HEK293 with hFc tag at the C-Terminus. It contains Ile31-Thr205.
<b>Accession</b>	Q13261-1
<b>Molecular Weight</b>	The protein has a predicted MW of 45.1 kDa. Due to glycosylation, the protein migrates to 70-80 kDa based on Tris-Bis PAGE result.
<b>Endotoxin</b>	Less than 1EU per µg by the LAL method.
<b>Purity</b>	> 95% as determined by Tris-Bis PAGE > 95% as determined by HPLC

## Formulation and Storage

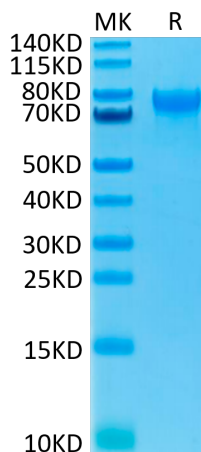
<b>Formulation</b>	Lyophilized from 0.22µm filtered solution in PBS (pH 7.4). Normally 8% trehalose is added as protectant before lyophilization.
<b>Reconstitution</b>	Centrifuge the tube before opening. Reconstituting to a concentration more than 100 µg/ml is recommended. Dissolve the lyophilized protein in distilled water.
<b>Storage</b>	-20 to -80°C for 12 months as supplied from date of receipt. -20 to -80°C for 3-6 months in unopened state after reconstitution. 2-8°C for 2-7 days after reconstitution. Recommend to aliquot the protein into smaller quantities for optimal storage. Please minimize freeze-thaw cycles.

## Background

Interleukin-15 receptor alpha (IL-15R alpha) is a high affinity IL-15 binding protein that is crucial for mediating IL-15 functions such as memory CD8 T cell proliferation and NK, NK/T cell, and intestinal intraepithelial lymphocyte development.

## Assay Data

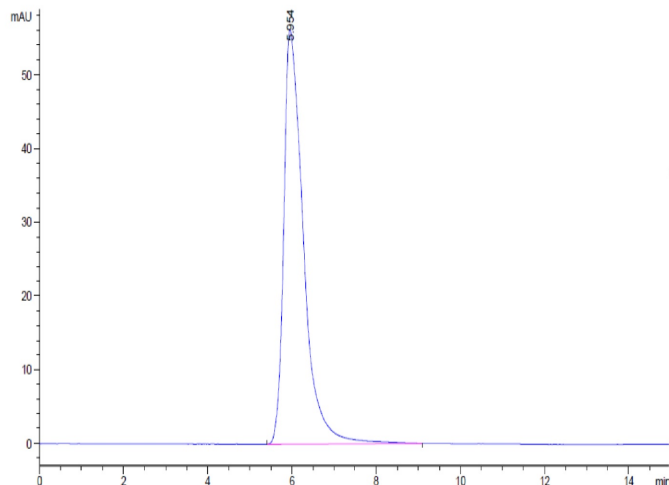
### Tris-Bis PAGE



Human IL-15RA on Tris-Bis PAGE under reduced condition. The purity is greater than 95%.

### SEC-HPLC

Assay Data

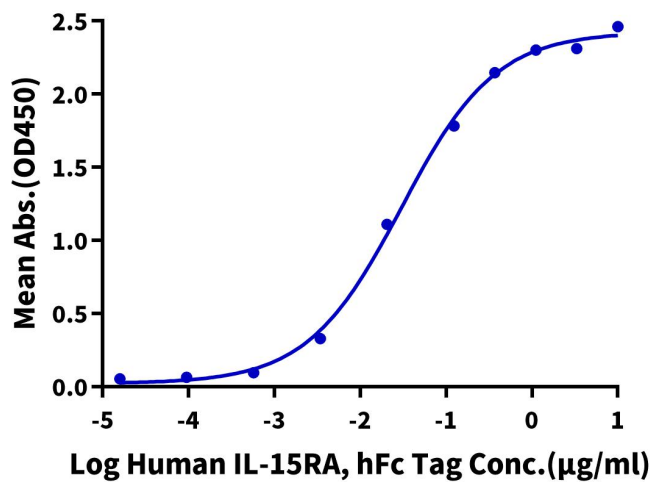


The purity of Human IL-15RA is greater than 95% as determined by SEC-HPLC.

ELISA Data

**Human IL-15RA, hFc Tag ELISA**

0.05µg Human IL-15, No Tag Per Well



Immobilized Human IL-15, No Tag at 0.5µg/ml (100µl/Well) on the plate. Dose response curve for Human IL-15RA, hFc Tag with the EC50 of 30.2ng/ml determined by ELISA.